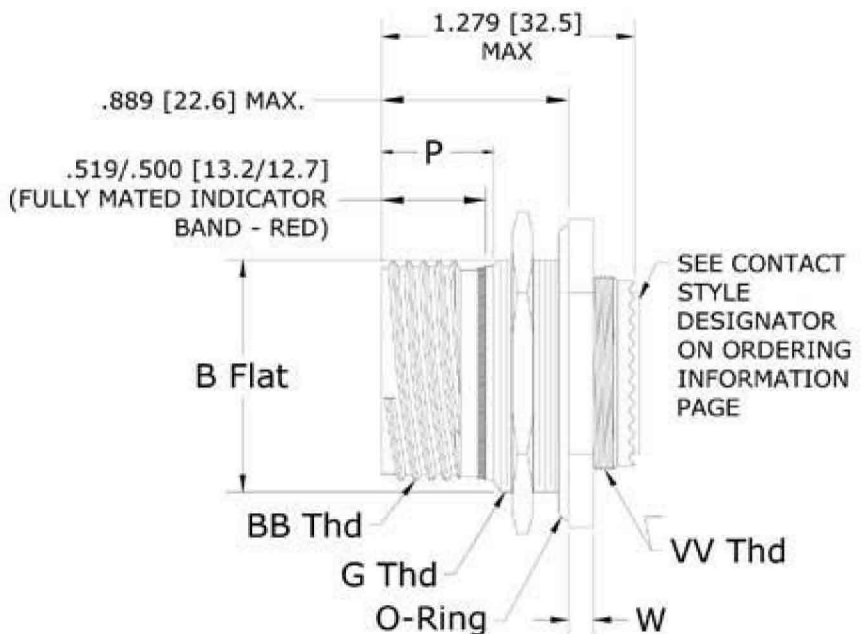
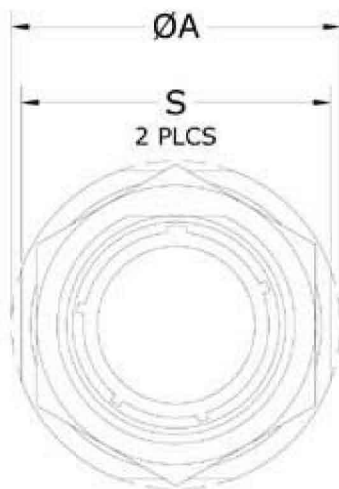


NOTES:

1. PANEL THICKNESS .126/.050 [3.20/1.58]
2. CONNECTOR CONTAINS REQUIRED FEATURES FOR PROPER FIT IN A TYPE "E" PANEL
3. FOR CONNECTOR COMPONENTS AND ACCESSORIES, SEE PAGE C-5



SHELL SIZE	SHELL SIZE CODE	ØA ±.011 [±0.3]	B Flat +.004/-0.006 [+0.10/-0.15]	BB Thd CLASS 2A 0.1P-0.3L-TS	G Thd -6g 0.100R	P +.024/-0.000 [+0.6/-0.0]	S ±.016 [±0.4]	VV Thd -6g 0.100R	W +.035/-0.004 [+0.9/-0.1]
9	A	1.189 [30.2]	.651 [16.53]	.6250	M17 x 1.0	.555 [14.1]	1.063 [27.0]	M12 x 1.0	.087 [2.2]
11	B	1.374 [34.9]	.751 [19.07]	.7500	M20 x 1.0	.555 [14.1]	1.252 [31.8]	M15 x 1.0	.087 [2.2]
13	C	1.500 [38.1]	.938 [23.82]	.8750	M25 x 1.0	.555 [14.1]	1.374 [34.9]	M18 x 1.0	.087 [2.2]
15	D	1.626 [41.3]	1.062 [26.97]	1.0000	M28 x 1.0	.555 [14.1]	1.500 [38.1]	M22 x 1.0	.087 [2.2]
17	E	1.752 [44.5]	1.187 [30.15]	1.1875	*M32 x 1.0	.555 [14.1]	1.626 [41.3]	M25 x 1.0	.087 [2.2]
19	F	1.937 [49.2]	1.312 [33.32]	1.2500	M35 x 1.0	.555 [14.1]	1.811 [46.0]	M28 x 1.0	.118 [3.0]
21	G	2.063 [52.4]	1.437 [36.50]	1.3750	M38 x 1.0	.555 [14.1]	1.937 [49.2]	M31 x 1.0	.118 [3.0]
23	H	2.189 [55.6]	1.562 [39.67]	1.5000	M41 x 1.0	.555 [14.1]	2.063 [52.4]	M34 x 1.0	.118 [3.0]
25	J	2.311 [58.7]	1.687 [42.85]	1.6250	M44 x 1.0	.555 [14.1]	2.189 [55.6]	M37 x 1.0	.118 [3.0]

* = MODIFIED MAJOR DIA. 1.258/1.252 [31.95/31.80]

DIMENSIONS ARE IN INCHES [MILLIMETERS]